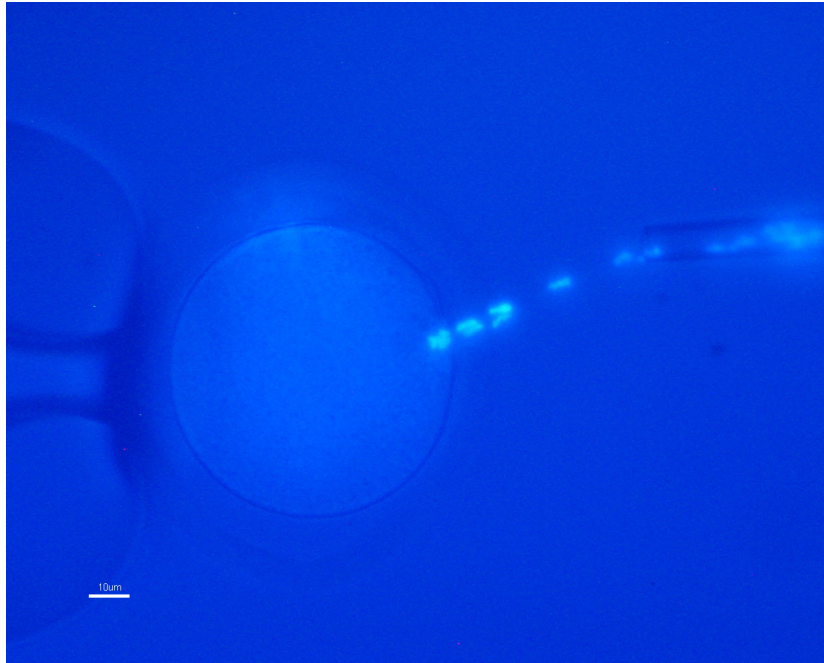


Oocyte Enucleation Phase in Mouse Cloning

Abdolhossein Shahverdi, Ph.D., Rahman Fakhery, B.Sc., Azam Dalman, M.Sc.*

Embryology Department ,Royan Institute



Mouse oocytes were placed in HEPES-T₆ containing 7.5 μg/ml cytochalasin B and 5 μg/ml Hoechst prior to enucleation, and enucleation was performed on oocytes using the manipulator. The oocyte held in place by gentle suction of a holding pipette (oocyte diameter approx. 70 μm). The metaphase spindle (arrow) is aspirated into an enucleation pipette (1).

Reference

1. Liu L, Oldenbourg R, Trimarchi JR, Keefe DL. A reliable, noninvasive technique for spindle imaging and enucleation of mammalian oocytes. *Nat Biotechnol*, 2000; 18(2): 223-225

* Corresponding Address: P.O.Box: 19395-4644, Embryology Department, Royan Institute, Tehran, Iran
Email: dalman79@yahoo.co.uk

